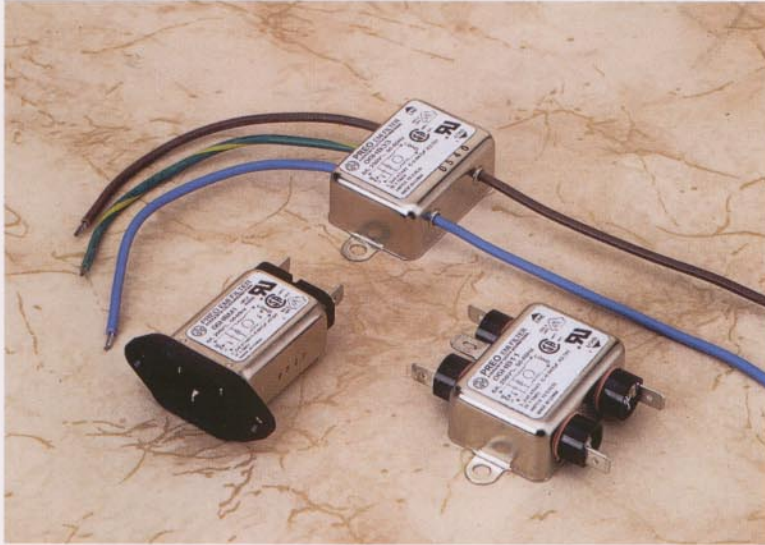


PREO Power Line EMI Filters

A Division of Eastek International Corporation



Series HB

For UL544 and IEC601
Health Care Equipment



UL Recognized
CSA Certified
VDE Approved

Introduction

The HB series are general purpose EMI filters specially designed for medical and dental equipment, both patient care and nonpatient categories. The leakage current in this series is extremely low to satisfy the stringent leakage current limit imposed by safety regulations for medical and dental equipment, such as UL544 and IEC601.

Minimum Insertion Loss in dB

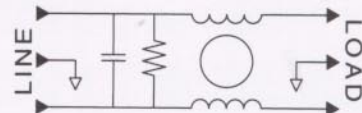
Common mode (line to ground) in 50 ohm system:

MODEL	Frequency in MHz							
	0.05	0.10	0.15	0.50	1.0	5.0	10	30
06HB11/33/M1	3	7	11	20	22	24	22	18

Differential mode (line to line) in 50 ohm system:

MODEL	Frequency in MHz							
	0.10	0.15	0.50	1.0	3.0	5.0	10	30
06HB11/33/M1	3	6	14	20	30	35	35	35

Schematic



Electrical ratings

Maximum operating voltage:	250 VAC
Operating frequency:	50/60 Hz
Hipot rating (one minute):	
Line to Ground:	1500 VAC
Line to Line:	1450 VDC
Maximum leakage current (each line to ground):	
@ 120 VAC / 60 Hz:	2 μ A
@ 250 VAC / 50 Hz:	5 μ A
Rated current at 40°C ambient temperature:	
06HB11, 06HB33, 06HBM1	6 A

Now in Stock at

EASTEK INTERNATIONAL CORPORATION

114 Joey Drive, Elk Grove, IL 60007, USA
Phone: 847 437 2800 Fax: 847 437 2809

or your local agent